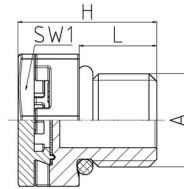
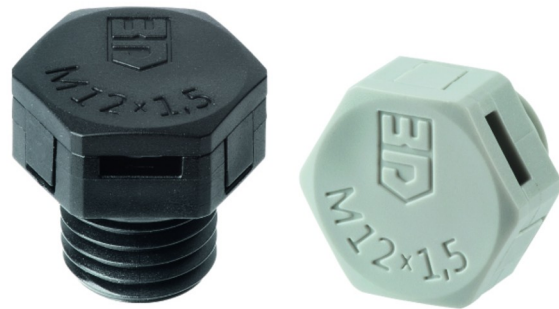


Venting element

| | |
|--------------------------|-------------------------|
| Body | Polyamide PA6 V-0 |
| Membrane | Polyether sulphone PES |
| O-ring | Nitrile rubber NBR |
| Connecting thread | metric, as per EN 60423 |



Properties


| | |
|-----------------------------|--|
| | <ul style="list-style-type: none"> • protection for hermetically sealed electro-technical and electronic enclosures against condensation water from alternating temperature and pressure • pressure, continuous ventilation and adaption of the inner pressure • hydrophobic and oleophobic PES-membrane • Wheatering test and test resistance to light (UV) according to ISO 4892-2 • Polyamide material fulfills UL 94 V-0 and EN 45545-2, R22:HL3 / R23: HL3 |
| Water entry pressure | > 0,83 bar (dynamic WEP, 30 seconds) |
| Temperature range | -40 °C +100 °C |
| Protection grade | IP66/ IP68 - 0,6 bar (60 min.)/ IP69 |
| Comment | The venting element has no function if it is blocked with dust and / or submerged in water. |

Features



RAL 9005


Connecting thread standard length

| A | L | SW1 | H | RQ* |  VPE | Part No. |
|---------|----|-----|------|---------|---|-------------|
| M12x1,5 | 10 | 17 | 17,8 | ca. 10 | 100 | JDAE12PA/SW |
| M20x1,5 | 10 | 27 | 21,6 | ca. 30 | 10 | JDAE20PA/SW |
| M40x1,5 | 18 | 50 | 35,6 | ca. 170 | 5 | JDAE40PA/SW |




RAL 7035


Connecting thread standard length

| A | L | SW1 | H | RQ* |  VPE | Part No. |
|---------|----|-----|------|---------|--|--------------|
| M12x1,5 | 10 | 17 | 17,8 | ca. 10 | 100 | JDAE12PA7035 |
| M20x1,5 | 10 | 27 | 21,6 | ca. 30 | 10 | JDAE20PA7035 |
| M40x1,5 | 18 | 50 | 35,6 | ca. 170 | 5 | JDAE40PA7035 |

Connecting thread short

| A | L | SW1 | H1 | RQ* |  VPE | Part No. |
|---------|---|-----|------|--------|--|----------------|
| M12x1,5 | 6 | 17 | 13,8 | ca. 10 | 100 | JDAE12PA067035 |

Connecting thread short

| A | L | SW1 | H1 | RQ* |  VPE | Part No. |
|---------|---|-----|------|--------|--|---------------|
| M12x1,5 | 6 | 17 | 13,8 | ca. 10 | 100 | JDAE12PA06/SW |

*RQ = theoretical air flow through usable surface at $\Delta p = 0,07$ bar

Comment: All listed parts- are in accordance with EN 45545-2, clause 4.5 "Non-listed products" with - exposed areas ≤ 0.20 m², location interior, R22- exposed areas ≤ 0.20 m², location exterior, R23- have according to EN 45545-2, clause 4.3.2, Rule 1 total, combustible / flammable mass of the products < 100 g for grouped products, location interior < 400 g für grouped products, location exterior.

Assembly only with suitable tool, for example box spanner